

# **CASIO System Monitor**

*Sophisticated System Management.*

## Table of Contents

Table of Contents .....	2
Features .....	2
Main Menu .....	2
Network Menu .....	3
Battery Chart .....	3
Network Traffic .....	4
Settings Windows .....	4
WLAN Scanner .....	5
Symbology .....	5
Support .....	6
System Requirements .....	6
Installation .....	6
Restrictions .....	6
Disclaimer .....	7

## Features

- Detailed system information, e.g. about battery, memory, data transmission, networks.
- Shortcuts to system settings.
- Controlled by small icons on Today Screen of your PDA.
- Customizable interface.
- Optimized for Windows Mobile 5.0 ® and later versions.

## Main Menu

After installation launch the application from the START menu of your mobile device. Tap on the battery icon of CASIO System Monitor on the Today Screen of your PDA to open the main menu.

### Main Menu

**Please, note: Soft Reset operation stops all running programs and network connections. Unsaved data will be lost.**



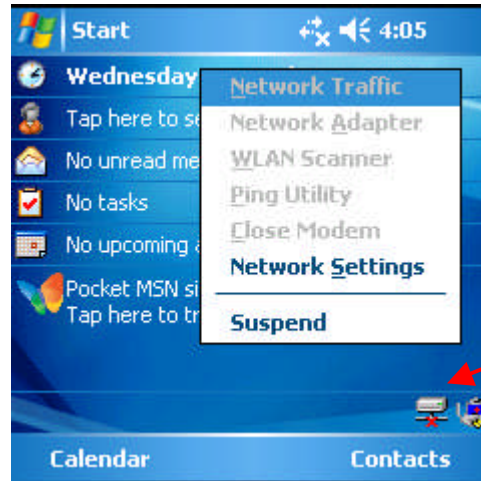
Tap on battery icon

## Network Menu

If enabled, tap on the network icon to open the network menu that offers additional commands.

### Network Menu

**Remarks:** With “Suspend”/“Resume” you can disable/enable the monitoring of all network connections without removing the network icon through the SETTINGS MENU. Doing so will free resources and hence speed up other applications. Besides, it can avoid flickering of multiple icons on Today Screen.



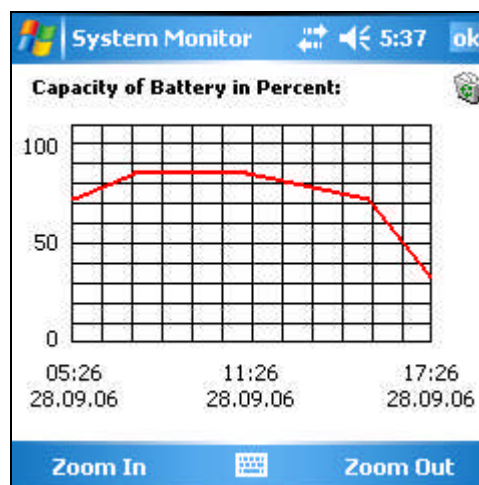
Network Icon

## Battery Chart

CASIO System Monitor retrieves the power status of your Pocket PC. The status indicates whether the system is running on AC or DC power, whether or not the batteries are currently charging, and the remaining life for the main battery in percent.

### Battery Chart

**Remarks:** Snapshots will be made every 4 minutes. The application will have to run 8 minutes at least before the first line can be drawn.

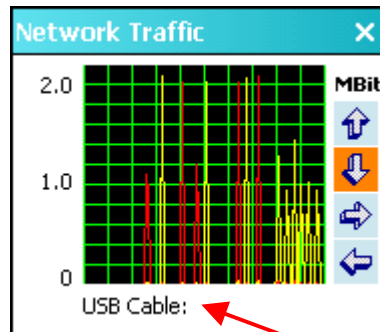


Reset all data

## Network Traffic

Here you can see the bandwidth of the selected network adapter. Bandwidth can be displayed in different scales.

### Network Traffic



Scale up/down

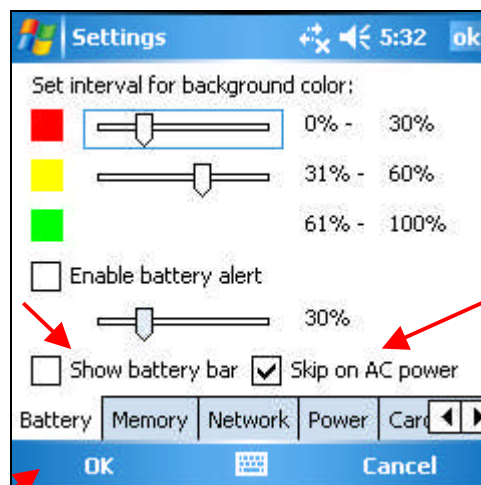
Toggle between adapters

Name of selected network adapter

## Settings Windows

Customize all aspects of CASIO System Monitor here.

### Settings Window



Show the battery status as a thin line at the top of screen

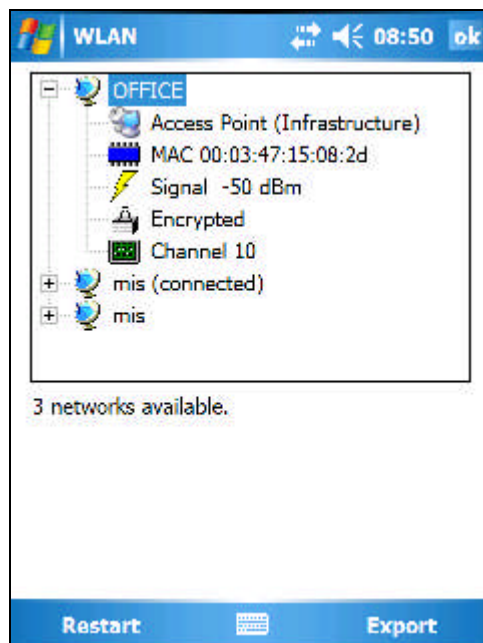
Check "Skip on AC power" to disable data collection while the device is connected to AC power (might be necessary on some devices)

Confirm your entries

Leave without any change

## WLAN Scanner

CASIO System Monitor can show you a list of wireless networks in range sorted by signal strength.



The WLAN Scanner is not available while an ActiveSync connection to PC is active. Please, close the connection to PC before using this option.

## Symbology

Information	Symbol
SSID of wireless network in infrastructure mode, networks without encryption are highlighted by green lines	
SSID of wireless network in ad hoc mode, networks without encryption are highlighted by green lines	
Type of connection	
MAC address (BSSID)	
Manufacturer	
Signal strength (dBm)	
Encryption	

## Support

Contact CASIO via <http://www.casio-b2b.com>.

## System Requirements

### *CASIO Handy Terminal*

- CASIO Handy Terminal running Windows Mobile 5.0 ® or later.
- Sufficient memory for CASIO System Monitor to be installed to main memory.

### *Desktop PC*

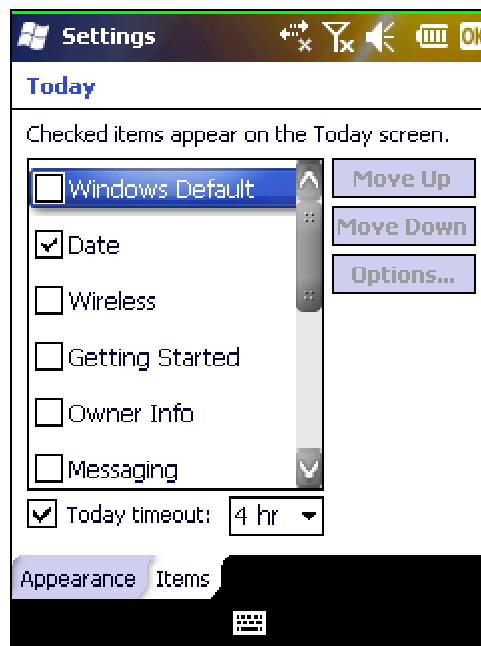
- Microsoft ActiveSync 4.2 or later which must match to the OS of your mobile device.
- Microsoft .NET Framework 2.0 or later on PC in order to run the SETUP.EXE.

## Installation

To begin with, remove previous versions from both PC and mobile device. Connect your PDA via Microsoft ® ActiveSync. Run SETUP.EXE on your PC and follow the instructions on the screen. Alternatively, copy SYSTEMMONITOR.CAB to your mobile device and execute SYSTEMMONITOR.CAB there from File Explorer. Installation will start automatically afterwards. Accept default settings. Do not install the application to storage cards.

## System Settings

On Windows Mobile 6.5 Professional it might be necessary to adjust the default settings. At START, SETTINGS, TODAY, tab “Items”, please deactivate the option “Windows Default” in order to make the application appear on the Today Screen of your PDA.



## Restrictions

CASIO System Monitor may not support proprietary driver software for RF adapter cards from third party vendors.

Temporarily disable the monitoring of network traffic if not needed to suppress flickering of the icons on Today Screen. You can do that in the NETWORK MENU.

## Disclaimer

This software is provided AS IS for educational purposes only, with no warranties, and confers no rights. Error checking is elided for clarity. Carry out sufficient tests prior to using it in a productive environment. CASIO Europe GmbH accepts no responsibility for loss or damage arising from its use, including damage from virus. Please, note: This configuration information may be changed without any further notice. Casio Europe GmbH does not guarantee future compatibility. By using this software you agree to these terms and conditions. CASIO does not take over responsibility for damage or losses, which results from the use of this treatise. CASIO does not take over responsibility for losses or demands of third parties, which are due from the use of this software. CASIO does not take over responsibility for damage or losses, which are caused by deleted data in consequence of malfunctioning, empty accumulator or repairs. Make sure to always make back up copies of all important data on additional data media in order to prevent a data loss. The use of the preinstalled software in applications or systems, in which malfunctioning of this software after human discretion and with consideration of all circumstances and conditions, on which the software is used and/or is to be used, could cause injuries of lives, harm bodies or health, is expressly forbidden. The use of the program in such an environment exclusively happens on your own risk and on risk of the persons concerned of it. It is urgently recommended to test the software before the actual employment comprehensively in a non-critical environment. CASIO does not take over a function warranty for software of third parties presented in this manual. The operator carries the entire risk for the fact that the software can be used for the purposes desired. When leading a motor vehicle do not let yourself be diverted by the use of the device. The operation of certain parts of the equipment requires the attention of the user. If you take the attention off the road while driving, this can possibly cause an accident or have other serious consequences. Even occasional, short diversions can be as dangerous, if your attention is diverted from driving at a critical time. Do not change any system setting whilst driving and do not enter any data by hand. Stop the vehicle on normal and safe way, before you go through these actions. This is particularly important, because for the setting-up or changing of functions you might take your attention off the road and your hands off the steering wheel. CASIO does not take responsibility, warranty or other obligation for the fact that ANY use of the equipment when driving or serving a motor vehicle is legally, surely, recommended somehow, or intended.

### **Trademarks / Copyrights**

CASIO System Monitor is protected by German law and world wide copyright. "CASIO" is a registered trademark of CASIO Computer Co., Ltd., Japan. All brands, logos, Internet addresses, product or model descriptions referring to products or services belonging to CASIO or to firms linked to CASIO are trademarks, and belong to CASIO or to firms linked to CASIO. The list of trademarks and company indicators is not exhaustive, and the omission of a trademark on these websites does not indicate a renunciation of their protection. The use, and particularly the amendment, of CASIO symbols/brands is prohibited, unless previous written authorisation has been given by CASIO or the authorisation is laid down by law (not used as a trademark).

Microsoft ®, Windows ® and Windows Mobile ® are registered trademarks of Microsoft Corporation in the United States and/or other countries. Microsoft ® is not in any business relation with CASIO regarding this product.

Other product and company descriptions that are used on this website may be trademarks belonging to the relevant owner, and these are expressly recognised as such.

Casio Europe GmbH  
Mobile Industrial Solutions  
Casio-Platz 1  
22848 Norderstedt  
Germany  
Geschäftsführer: Kazuyuki Yamashita  
Stellv. Geschäftsführer: Yoshiyuki Kuroda  
Amtsgericht Kiel, HRB 3315

Copyright © 2004 - 2010 Casio Europe GmbH (<http://www.casio-b2b.com>)