

CAB FILE Automatic Setup Tool

Manual

(Version 1.01)

CASIO Computer Co., Ltd.

Copyright ©2008. All rights reserved.

September 2008

Table of Contents

	Editorial Record	3
Chapter 1.	Preface	4
Chapter 2.	Operation Method	5
2.1	Automatic Invoking When Reset Takes Place	5
2.1.1	Invoking via Standard Method	5
2.1.2	Invoking via Card (SD, CF etc.)	5
2.2	Invoking at Command Prompt	6
2.2.1	Checking Version	6
2.2.2	Curbing Reset after Installation of CAB Files	7
2.3	User Setup Application	8
Chapter 3.	Operations in Detail	9
3.1	Deleting Unnecessary CAB Files	10
3.2	Installing CAB Files	11
3.2.1	Service Pack	11
3.2.2	Individual Patch Files, Other Patch Files	11
3.3	Reset by CAB File	12
3.4	Reset Process after Installation	12
3.5	Invoking User Setup Application	13
3.6	Registry	14
Chapter 4.	Precautions	15
4.1	Applicable Series and Versions	15
4.2	Backup by Recovery Tool	15
4.3	User Setup Application	15

No part of this document may be produced or transmitted in any form or by any means, electronic or mechanical, for any purpose, without the express written permission of CASIO Computer Co., Ltd. in Tokyo Japan. Information in this document is subject to change without advance notice. CASIO Computer Co., Ltd. makes no representations or warranties with respect to the contents or use of this manual and specifically disclaims any express or implied warranties of merchantability or fitness for any particular purpose.

© 2008 CASIO Computer Co., Ltd. All rights reserved.

Editorial Record

[illegible]

1. Preface

The **CAB File Automatic Setup Tool** is a utility program which runs on the CASIO handheld terminals (hereafter referred to as “the terminal” in this reference manual).

The execution file name of the CAB File Automatic Setup Tool is **Setup.exe** which is referred to as “the tool” in explanation in subsequent pages.

The tool will automatically install all CAB files* stored in the same folder where the tool resides when the system is started up by performing a reset on the terminal

*; a cabinet (.CAB) file is a library of compressed files stored as a single file. Cabinet files are used to organize installation files that are copied to the user's system.

Applicable series of CASIO handheld terminals

- DT-X5 series
- DT-X7 series
- DT-X10 series
- DT-X11 series
- DT-X30 series
- IT-10 series
- IT-500 series
- IT-600 series
- IT-3000 series
- IT-3100 series

Applicable versions

The version of the tool explained in this reference manual is dependent on each series of the CASIO handheld terminal. Table 1.1 lists up all the versions of the tool for the respective series.

Table 1.1

Model no.	Version no.
DT-X10	1.06
IT-500	1.06
IT-3000	1.04
DT-X5	1.05
IT-10	1.09
IT-600 *	2.01
DT-X11 *	2.01
DT-X7 *	2.01
IT-3100*	2.01
DT-X30*	2.01

Note:

The tool with “*” only has been released and available current as of September 2008.

2. Operation Method

This chapter explains how to use the tool.

2.1 Automatic Invoking When Reset Takes Place

To invoke the tool at a time when a reset on the terminal takes place, place the tool and CAB files together in the same folder.

2.1.1 Invoking via Standard Method

If the tool is stored in a specific folder in the **Flash Disk**, it will be automatically invoked at a time when a reset on the terminal takes place. This causes all CAB files in the same folder to be automatically installed.

Path that locates the folder is model dependant. See Table 2.1 for paths of the series.

Table 2.1

Model no.	Folder
DT-X5	\FlashDisk\CE\SH
IT-10	\FlashDisk\CE\SA1100
Other models	\FlashDisk\CE\ARM

2.1.2 Invoking via Card (SD, CF etc.)

If the tool is stored in a specific folder in card (SD, CF etc.), it will be automatically invoked at a time when a reset on the terminal takes place. This causes all CAB files in the same folder to be automatically installed.

Table 2.2 shows paths of the folder which are model dependant. This method invoking the tool in a card can not be operable on other handheld terminals not listed in the table.

Table 2.2

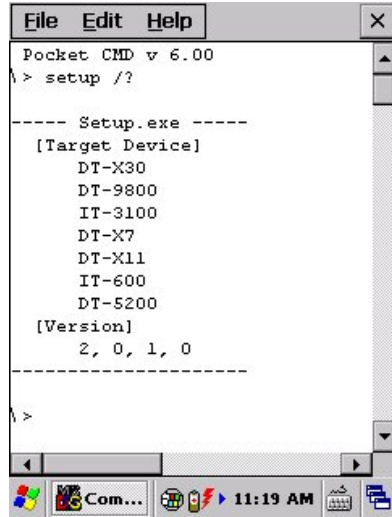
Model no.	Path of Folder
IT-10	\CE\SA1100
IT-600 DT-X11 DT-X7 IT-3100 DT-X30	\CE\ARM

In case, the tool is stored both in the Flash Disk and in card (SD, CD etc.), the one in the Flash Disk has precedence over the other and only is invoked.

2.2 Invoking at Command Prompt

2.2.1 Checking Version

To check the version number of the tool, invoke the **Setup /?** command at command prompt. This displays version of the tool stored in the terminal.



Note:

The model numbers DT-9800 and DT-5200 listed in Target Device field are not overseas versions.

Figure 2.1

However, this feature is available with versions for the series of handheld terminals listed in the table or later versions.

Table 2.3

Model no.	Version of the tool
DT-X10	1.06
IT-500	1.06
IT-3000	1.04
DT-X5	1.05
IT-10	Not supported
IT-600	2.01
DT-X11	2.01
DT-X7	2.01
IT-3100	2.01
DT-X30	2.01

Checking version of the tool can also be performed on PC by following the procedure below.

1. Right-click the execution file, **Setup.exe**, of the tool on the PC.
2. Choose **Properties** in the menu.
3. Choose **Version** tab in the Properties dialogue.
4. See the version number appeared in **File version** field in Figure 2.2.

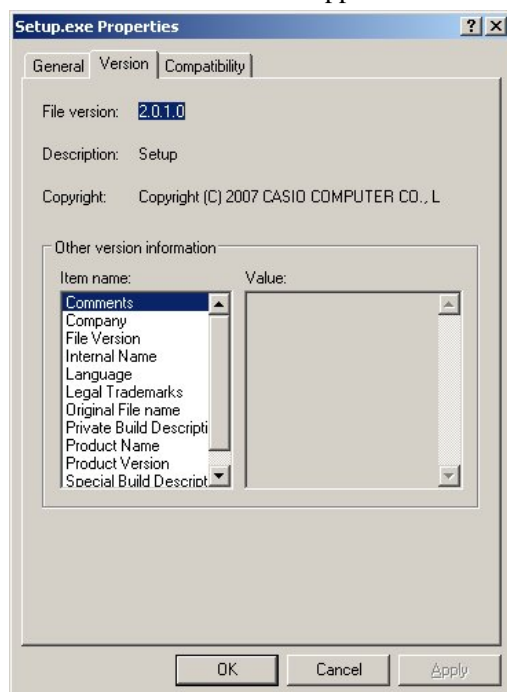


Figure 2.2

2.2.2 Curbing Reset after Installation of CAB Files

The tool will lastly perform a reset automatically on the terminal every time installing CAB file(s). If you wish to curb a reset after installing CAB files by the tool, invoke the tool with the **Setup /nr** command at command prompt. This can curb reset to take place. Table 2.4 shows the versions and the series of handheld terminals that support the feature.

Table 2.4

Model no.	Version
DT-X10	Not support
IT-500	Not support
IT-3000	Not support
DT-X5	Not support
IT-10	Not support
IT-600	2.01
DT-X11	2.01
DT-X7	2.01
IT-3100	2.01
DT-X30	2.01

2.3 User Setup Application

The user can deploy own setup application program in the terminal (hereafter referred to as “User Setup Application” in this reference manual). The tool will seek this user setup application installed in the terminal and invoke it when finding.

Execution file name and path name of folder are determined by each series of handheld terminals which can be referred in detail to in Chapter 3.5 “Invoking User Setup Application”.

3. Operations in Detail

The tool will perform setup by following the procedure below.

1. Deletes CAB file if any one is specified to be deleted in the folder.
2. Seeks CAB file in the folder and then installs it if it has not been installed yet.
3. Last procedure by the tool is determined whether the tool has installed CAB file or not.

Table 3.1

CAB file in the folder	Last procedure by the tool
In case installation has been performed	Performs a reset on the terminal. See note.
In case installation has not been performed	Starts up user setup application.

Note:

Performing reset on the terminal causes also the tool itself to invoke again. In second time of invocation, however, the performance of reset will not take place because no CAB file remained in the folder.

3.1 Deleting Unnecessary CAB Files

The tool will delete all unnecessary CAB files if a text file resides in the same folder which lists up the CAB files to be deleted. The text file in the same folder must be named **Delete*.ini** to list up all CAB files that you wish to delete.

The following shows an example of creating the text file and how to describe unnecessary CAB files in the text.

Example of file names;

Delete1.ini

Delete2.ini

:

:

Note:

The file name, **DeleteCab.ini**, is for only the system. It is strictly prohibited for other use.

Example of describing file names;

ServicePackDT5200.CAB
PatchDT5200.100.CAB
PatchDT5200.200.CAB
PatchDT5200.300.CAB

Delete1.ini

PatchDT5200.400.CAB
PatchDT5200.500.CAB

Delete2.ini

The feature is supported by the versions and the series of handheld terminal in the table below.

Table 3.2

Model no.	Version
DT-X10	1.04
IT-500	1.04
IT-3000	1.03
DT-X5	1.04
IT-10	1.05
IT-600	1.01 or later
DT-X11	1.00 or later
DT-X7	2.00 or later
IT-3100	2.01
DT-X30	2.01

3.2 Installing CAB Files

The tool will install all CAB files stored in the same folder where the tool resides by following the priority order of file type. *** denotes ID of CASIO handheld terminal.

1. Service Pack (ServicePack***.CAB)
2. Individual patch files (Patch***.CAB)
3. Other patch files

Subsequent chapters explain in detail how to search CAB files in the folder.

3.2.1 Service Pack

There are two ways to search for CAB files. The search method depends on the series of handheld terminal.

A. For DT-X10, IT-500, IT-3000 and DT-X5

The tool searches a CAB file with the fixed name of **ServicePack***.CAB**. See note 1.

After finding a CAB file, the tool checks that if the CAB file has been installed and time of the latest update on the file, and then installs the CAB file if necessary.

Notes:

1. Only one file of **ServicePack***.CAB** is allowed to reside in the folder.
2. To update ServicePack in the folder, it will be overwritten.

B. For IT-10, IT-600, DT-X11, DT-X7, IT-3100 and DT-X30

The tool searches the latest **ServicePack***.version.CAB**. See note.

A version number can be added to the file name of ServicePack. The tool searches the latest ServicePack in the folder by seeking the version number among the files and then installs it. If the latest file has been already installed, the tool will skip the process.

Note:

Multiple **ServicePack***.version.CAB** files can reside in the folder. However, a file with the latest version number will be target file to install.

3.2.2 Individual Patch Files, Other Patch Files

The tool will search all Patch*** files and other patch files, sort the files by file name, and then install.

3.3 Reset by CAB File

If a CAB file is deployed by the tool, **Setup.dll** of the CAB file will not perform a reset. The reason is that **Setup.dll** of the CAB file refers to the value written in the registry described below where “Reset = 0 “ has been set by the tool. See Chapter 3.6 “Registry” for detail.

Registry Key : HKEY_LOCAL_MACHINE\SOFTWARE\Service Pack

3.4 Reset Process after Installation

The tool will automatically perform a reset on the terminal after installing CAB file(s). To curb this reset process to take place, refer to Chapter 2.2.2 “Curbing Reset after Installing CAB File”.

3.5 Invoking User Setup Application

There are four ways (A to D), dependant on the series of handheld terminal, to invoke application program set up by the user.

A. DT-X10, IT-500

For user setup applications, the following files are available.

\FlashDisk\CE\ARM\SetApl1.exe
\FlashDisk\CE\ARM\SetApl2.exe
\FlashDisk\CE\ARM\SetApl3.exe

To make user setup applications effect, add the following to the registry.

[HKEY_LOCAL_MACHINE\Drivers\CASIO\UTIL\FLSETUP]
"2"= "\CE\ARM\SetApl1.exe"
"3"= "\CE\ARM\SetApl2.exe"
"4"= "\CE\ARM\SetApl3.exe"

Note:

"1"= "\CE\ARM\Setup.exe" cannot be set in the registry.

B. IT-3000, IT-600, DT-X7, IT-3100 and DT-X30

For user setup applications, the following file is available.

\FlashDisk\CE\ARM\APP\Setup.exe

C. IT-10

For user setup application, the following file is available.

\FlashDisk\CE\SA1100\APP \Setup.exe

D. DT-X5

For user setup application, the following files are available.

\FlashDisk\CE\SH\APP\SetupAP1.exe
\FlashDisk\CE\SH\SetupAP2.exe
\FlashDisk\CE\SH\SetupAP3.exe

Note:

"\FlashDisk\CE\SH\SetupAP1.exe" cannot be available.

3.6 Registry

Table 3.3 details the registries used by the tool.

Table 3.3

Set up “Enable” or “Disable” for performing reset by CAB file.			
[HKEY_LOCAL_MACHINE\SOFTWARE\Service Pack]			
Data Name	Data Type	Value	Description
Reset	DWORD	0	Not reset by CAB file.
		1	Reset by CAB file.
	No data.		Not reset by CAB file.
Registry to inquire path for deploying CAB file.			
[HKEY_LOCAL_MACHINE\ SOFTWARE\Apps\Microsoft Application Installer]			
Data Name	Data Type	Value	Description
fAskDest	DWORD	0	Not inquire path to deploy CAB file.
		1	Inquire path to deploy CAB file.
	No data.		Not inquire path to deploy CAB file.
Information about CAB file already installed			
[HKEY_LOCAL_MACHINE\ SOFTWARE\Apps\<file name>]			
Data Name	Data Type	Value	Description
CabFile	SZ	<file name>	In < >, the name of CAB file installed is described.
Instl	DWORD	<value>	Flag that indicates CAB file is already installed. Setting “0” forcibly in < > will remove CAB file from delete list in application.

4. Precautions

This chapter explains precautions you must note prior to use of the tool.

4.1 Applicable Series and Versions

The tool is customized for each series of the handheld terminals, and its feature is dependent on the version. Use always the latest version of the tool dedicated for the series of handheld terminal.

4.2 Backup by Recovery Tool

After installing Service Pack and individual patch file with the tool, be sure to back the files by invoking **Windows\Restore.exe** (= the recovery tool).

4.3 User Setup Application

User setup applications can be grouped into four by specification which are dependent on series of handheld terminals. For detail, refer to Chapter 3.5 “Invoking User Setup Application”.